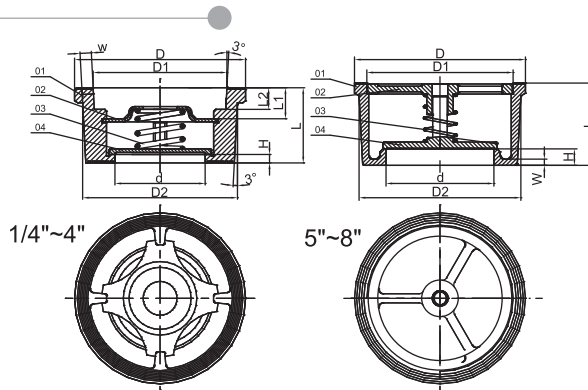


AWC SIZE: 1/4" ~ 8"



MATERIALS LIST

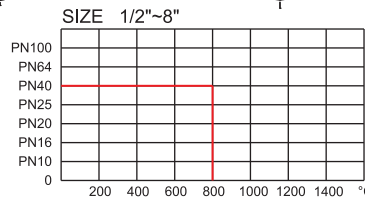
ITEM	PART	QTY	MATERIALS	
			316	304
01	Body	1	CF8M	CF8
02	Spring Cover	1	SS316	SS316
03	Spring	1	SS316	SS316
04	Disc	1	CF8M	CF8

FEATURES:

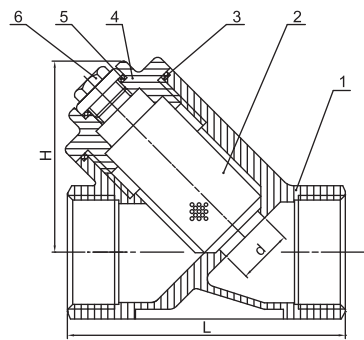
- *Installation: DIN PN-10-16-25-40
- *Face to face: DIN 3202 k4
- *Pressure rating: PN40
- *Investment casting body

DIMENSIONS

SIZE	d	D	D1	D2	W	L	L1	L2	H	UNIT:mm	
										Kgs	Op(mbar)
1/2"	15	39	28.3	34	3.1	16	4	2	3.5	0.10	23
3/4"	20	46	35.7	41	3.3	19	5	2	4	0.14	23
1"	25	54	40	49	4.5	22	5.5	3	4	0.22	23
1-1/4"	32	70	52.4	62	4.8	28	8	4	5	0.39	24
1-1/2"	40	81	61	71	5	32	10	4	5.5	0.54	25
2"	48	94	75.4	85	5.3	40	15	4	6	0.77	25
2-1/2"	62	113	90	102	6	46	17.5	5	6.5	1.25	26
3"	75	132	109	123	7	50	18	5	7.5	1.90	26
4"	95	150	125.3	140	7.5	60	23	6	8.5	2.80	27
5"	118	187	160	177	8	70	-	-	10	4.00	28
6"	140	217	187	205	7.2	106	-	-	13	6.30	29
8"	185	274	240	261	8	140	-	-	18	10.00	31



AYS with Blow-off SIZE: 1/4" ~ 4"

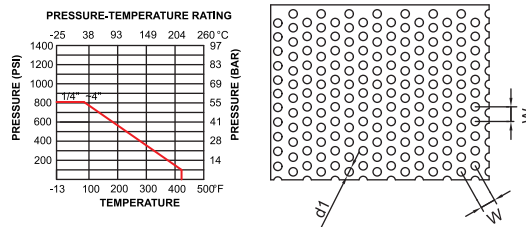


MATERIALS LIST

ITEM	PART	QTY	MATERIAL
1	Body	1	CF8M(1.4408)
2	Screen	1	SS316
3	Joint Gasket	1	PTFE
4	Bonnet	1	CF8M(1.4408)
5	O-Ring	1	VITON
6	Blow Off	1	SS316

FEATURES:

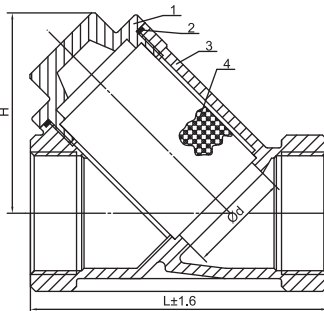
- *Pipe thread in accordance with ANSI B2.1, BS 21:1973, DIN 259/2999, ISO 228
- *The end-to-end length conforms to DIN 3202 part4 M8 series
- *Pressure rating: 800 PSI / PN40
- *Max. working temperature: 230 °C
- *Investment casting body and cap



DIMENSIONS

SIZE	d	L	H	W	d1	UNIT:mm
						Kgs
1/4"	10	64	43	2	1	0.22
3/8"	12	64	43	2	1	0.22
1/2"	15	64	45	2	1	0.23
3/4"	20	80	52	2	1	0.35
1"	25	90	68	2	1	0.62
1-1/4"	32	106	70	2	1	0.84
1-1/2"	40	119	80	2	1	1.08
2"	50	140	98	2	1	1.65
2-1/2"	61	167	117	2	1	2.69
3"	75	198	137	2	1	4.83
4"	94	238	163	2	1	7.65

AYS SIZE: 1/2" ~ 4"

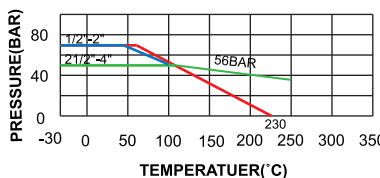


MATERIALS LIST

NO.	PART NAME	QTY	MATERIALS	
			316	304
1	Cap	1	CF8M	CF8
2	Gasket	1	PTFE	PTFE
3	Body	1	CF8M	CF8
4	SCREEN	1	316	304

FEATURES:

- *Pipe thread in accordance with ANSI B2.1, BS 21:1973, DIN 259/2999, ISO 228
- *The end-to-end length conforms to DIN 3202 part4 M8 series
- *Pressure rating: 800 PSI / PN40
- *Max. working temperature: 230 °C
- *Investment casting body and cap



DIMENSIONS

ITEM	SIZE	d	L	H	UNIT:mm
					KGS
1/2"	15	64	47.5	0.215	
3/4"	20	79	57	0.34	
1"	25	88	63.5	0.54	
1-1/4"	32	104	71.5	0.745	
1-1/2"	38	118	80.5	1.12	
2"	50	133	91.5	1.68	
2-1/2"	65	170	121	2.745	
3"	80	195	137	3.97	
4"	100	240	169	7.35	