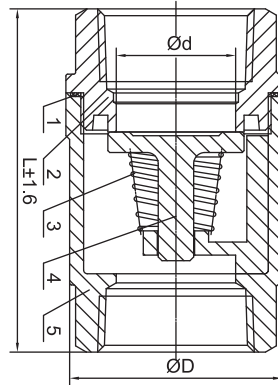
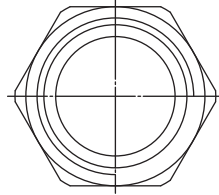


**Vertical Check Valve Screwed End**  
**3-PC Wafer Disc Check Valve Screwed End**  
**Piston Check Valve Screwed End**

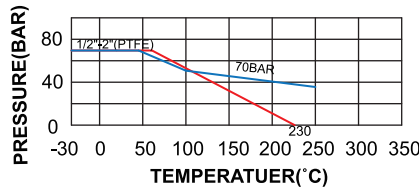


**AVC SIZE: 1/2" ~ 2"**



**FEATURES:**

- \*Pipe thread in accordance with ANSI B2.1, BS 21:1973, DIN 259/2999, ISO 228
- \*Pressure rating: 1000 PSI (63 BAR)
- \*Max. working temperature: 230 °C
- \*Investment casting body and cap



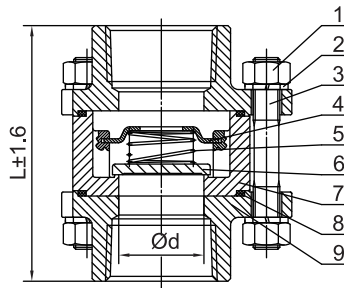
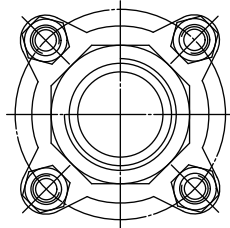
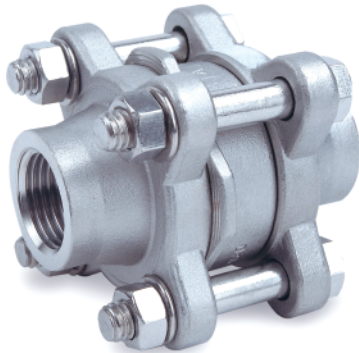
**MATERIALS LIST**

NO.	PART NAME	QTY	MATERIALS	
			316	304
1	Gasket	1	PTFE	PTFE
2	Cap	1	CF8M	CF8
3	Springs	1	316	304
4	Disc	1	316	304
5	Body	1	CF8M	CF8

**DIMENSIONS UNIT:mm**

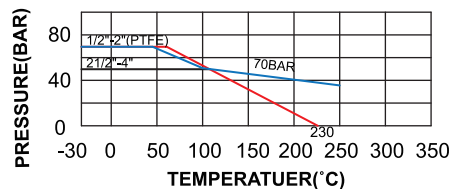
SIZE	d	D	L	kg
1/2"	15	34	60	0.21
3/4"	20	39	71	0.29
1"	25	46	79	0.41
1-1/4"	32	57	92	0.73
1-1/2"	38	67	105	1.06
2"	49	77	119	1.5

**A3WC SIZE: 1/2" ~ 4"**



**FEATURES:**

- \*Pipe thread in accordance with ANSI B2.1, BS 21:1973, DIN 259/2999, ISO 228
- \*Pressure rating: 1.6MPA
- \*Max. working temperature: 230 °C
- \*Investment casting body and cap



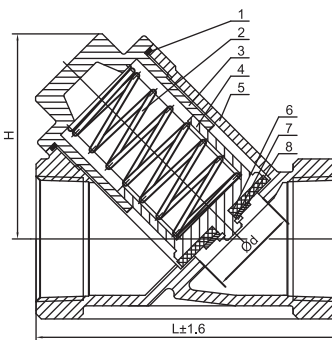
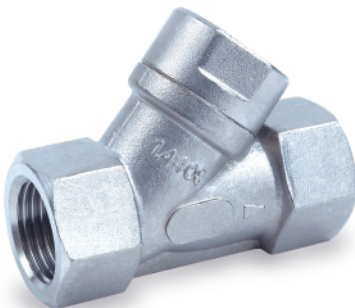
**MATERIALS LIST**

NO.	PART NAME	QTY	MATERIALS	
			316	304
1	Nut	4	316	304
2	Stop Screw	4	316	304
3	Bolt	4	316	304
4	Spring seat	1	316	304
5	Spring	1	316	304
6	Disc	1	316	304
7	Body	1	CF8M	CF8
8	Gasket	2	PTFE	PTFE
9	Cap	2	CF8M	CF8

**DIMENSIONS UNIT:mm**

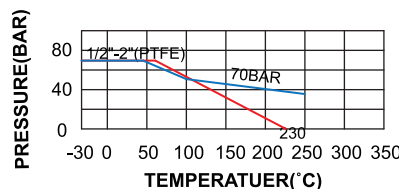
SIZE	d	L	Kg
1/2"	15	60	0.37
3/4"	20	70	0.69
1"	25	80	0.7
1-1/4"	32	84	1.16
1-1/2"	40	93	1.5
2"	50	106	2.24
2-1/2"	65	128	3.1
3"	80	145	6.6
4"	100	167	9.3

**APC SIZE: 1/2" ~ 2"**



**FEATURES:**

- \*Pipe thread in accordance with ANSI B2.1, BS 21:1973, DIN 259/2999, ISO 228
- \*Pressure rating: 800 PSI / PN40
- \*Max. working temperature: 230 °C
- \*Investment casting body and cap



**MATERIALS LIST**

NO.	PART NAME	QTY	MATERIALS	
			316	304
1	Gasket	1	PTFE	PTFE
2	Spring	1	316	304
3	Cap	1	CF8M	CF8
4	Spring	1	316	304
5	seat Body	1	CF8M	CF8
6	Seat	1	PTFE	PTFE
7	Gasket	1	316	304
8	Ring	1	316	304

**DIMENSIONS UNIT:mm**

ITEM	SIZE	d	L	H	KGS
	1/2"	15	64	47.5	0.27
	3/4"	20	79	57	0.45
	1"	25	88	63.5	0.78
	1-1/4"	32	104	71.5	1.07
	1-1/2"	38	118	80.5	1.40
	2"	50	133	91.5	2.31