

2-PC 10K Full Port Ball Valve Screwed End



A2FUT SIZE: 1/4" ~ 3"



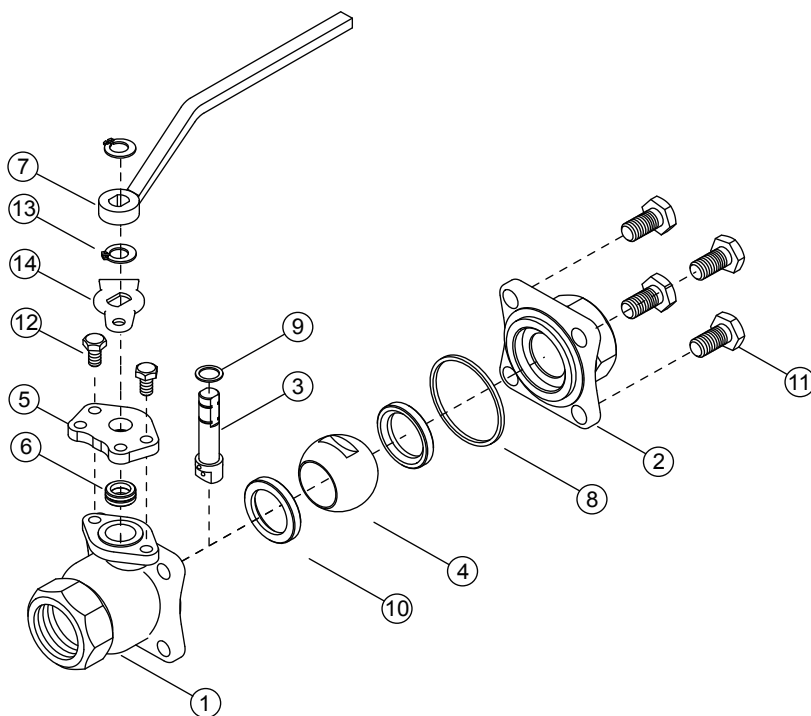
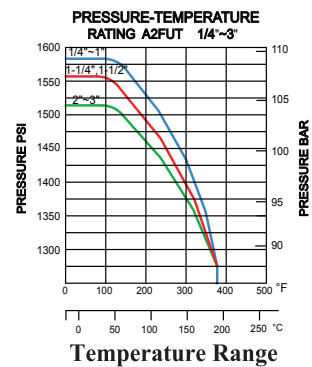
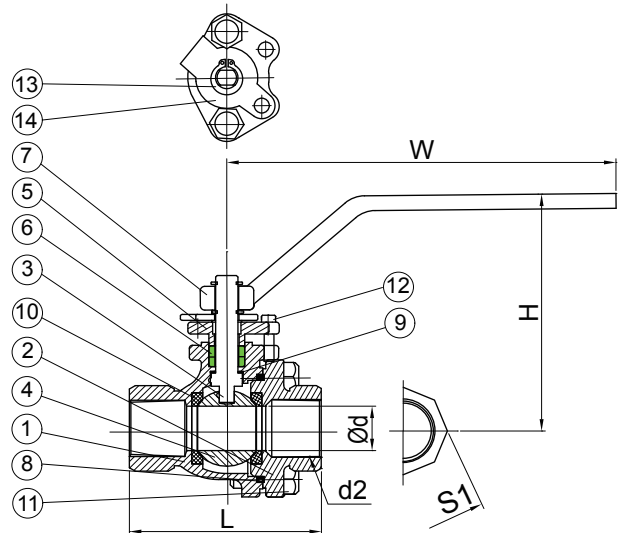
- *STAINLESS STEEL
AISI-316 (DIN 1.4408) (ASTM-A351-CF8M)
AISI-304 (DIN 1.4301) (ASTM-A351-CF8)
- *CARBON STEEL
S-45C (Din 1.0619) (ASTM-A216-WCB)

FEATURES:

- *Pipe thread in accordance with
ANSI B2.1, BS21 1973, DIN259/2999, ISO 228
- *JIS 10K
- *Blow-out proof stem / Full port
- *Investment casting body and cap
- *Screwed end
- *Material: ASTM-351-CF8M; ASTM-351-CF8 & ASTM-A216-WCB

MATERIALS LIST

ITEM	PARTS	QTY	MATERIAL		
			316	304	WCB
1	BODY	1	ASTM-A351-CF8M	ASTM-A351-CF8	ASTM-A216-WCB
2	CAP	1	ASTM-A351-CF8M	ASTM-A351-CF8	ASTM-A216-WCB
3	STEM	1	AISI 316	AISI 316	AISI 316
4	BALL	1	ASTM-A351-CF8M	ASTM-A351-CF8M	ASTM-A351-CF8M
5	GLAND	1	AISI 304	AISI 304	AISI 304
6	STEM PACKING	2	PTFE	PTFE	PTFE
7	HANDLE	1	WCB COVER WITH PAINT		
8	GASKET	1	PTFE	PTFE	PTFE
9	THRUSE WASHER	1	PTFE	PTFE	PTFE
10	BALL SEAT	2	25%GLASS FIELD	25%GLASS FIELD	25%GLASS FIELD
11	BOLT	1/4"-2" 4Pcs 2-1/2"-3" 6Pcs	AISI 304	AISI 304	AISI 304
12	GLAND BOLT	2	AISI 304	AISI 304	AISI 304
13	SNAP RING	2	AISI 304	AISI 304	AISI 304
14	STOPPER	1	AISI 304	AISI 304	AISI 304



DIMENSIONS

UNIT:mm

NOMINAL SIZE	Ød	H	L	W	S1
1/4"	8	71	62	130	23
3/8"	10	71	62	130	23
1/2"	15	102	65	130	29
3/4"	20	105	80	130	35
1"	25	124	90	160	43
1-1/4"	32	130	110	160	53
1-1/2"	40	115	120	230	59
2"	50	120	140	230	73
2-1/2"	65	155	160	400	92
3"	80	165	182	400	110