

3-PC Mounting Pad Full Port Ball Valve



DIRECT MOUNTING PAD

A3NS-MH SIZE: 1/4" ~ 4" NEW



STAINLESS STEEL
 AISI-316 (DIN 1.4408) (ASTM-A351-CF8M)
 AISI-304 (DIN 1.4308) (ASTM-A351-CF8)
CARBON STEEL
 S-45C (DIN 1.0619) (ASTM-A216-WCB)

FEATURES:

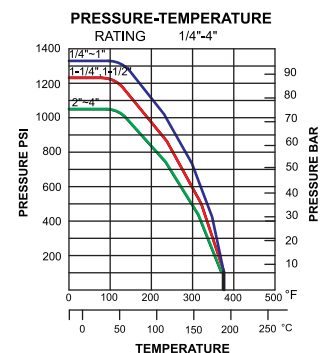
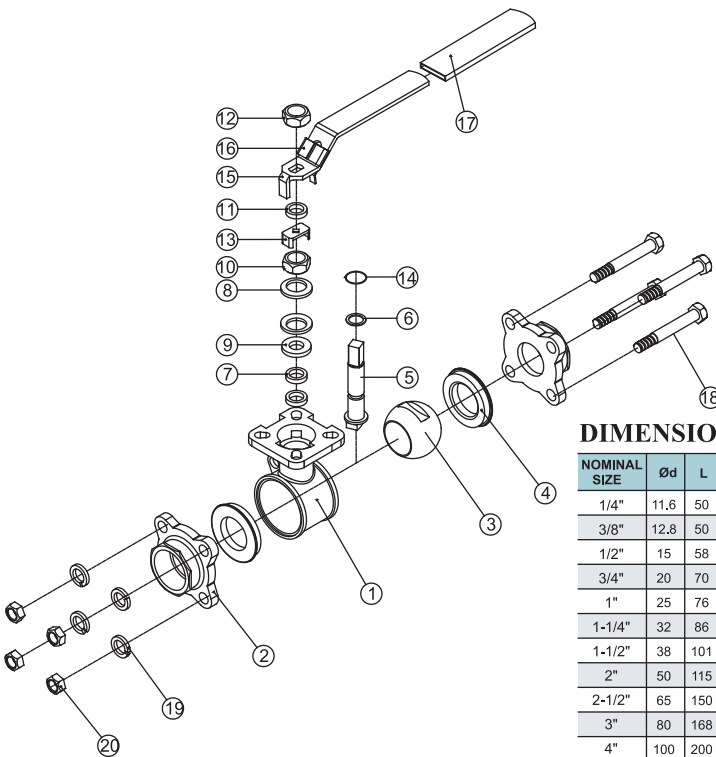
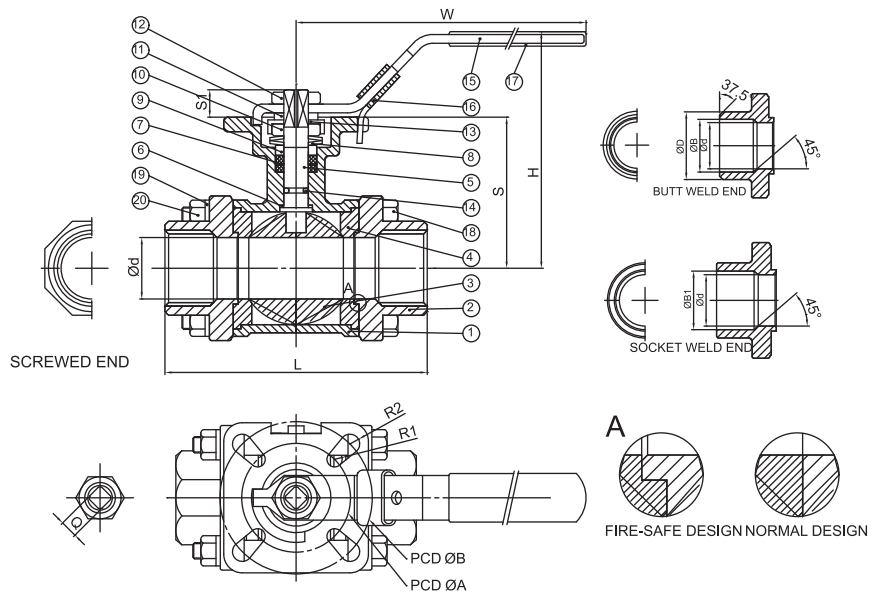
- *Pipe thread in accordance with ANSI B2.1, BS 21:1973, DIN 259/2999, ISO 228
- *Pressure rating: 1000 PSI (63 BAR)
- *Investment casting body and cap
- *Blow-out proof stem
- *ISO 5211 mounting pad
- *Screwed end / Butt weld end / Socket weld end
- *Lug body

OPTION:

- *Locking device
- *Anti-static device
- *Reduced port
- *Fire-safe design

MATERIALS LIST

ITEM	PARTS	QTY	MATERIALS		
			316	304	WCB
1	BODY	1	ASTM-A351-CF8M	ASTM-A351-CF8	ASTM-A216-WCB
2	CAP	2	ASTM-A351-CF8M	ASTM-A351-CF8	ASTM-A216-WCB
3	BALL	1	ASTM-A351-CF8M	ASTM-A351-CF8	ASTM-A351-CF8
4	BALL SEAT	2	PTFE	PTFE	PTFE
5	STEM	1	AISI 316	AISI 304	AISI 304
6	THRUST WASHER	1	PTFE	PTFE	PTFE
7	STEM PACKING	2	PTFE	PTFE	PTFE
8	B.V. WASHER	2	AISI 301	AISI 301	AISI 301
9	STEM RING	1	AISI 304	AISI 304	AISI 304
10	STEM NUT	1	AISI 304	AISI 304	AISI 304
11	SQUARE WASHER	1	AISI 304	AISI 304	AISI 304
12	HANDLE NUT	1	AISI 304	AISI 304	AISI 304
13	LOCK WASHER	1	AISI 304	AISI 304	AISI 304
14	ORING	1	VITON	VITON	VITON
15	HANDLE	1	AISI 304/430/410	AISI 304/430/410	AISI 304/430/410
16	LOCK DEVICE	1	AISI 304/430/410	AISI 304/430/410	AISI 304/430/410
17	PLASTIC COVER	1	P.V.C	P.V.C	P.V.C
18	BOLT	4(3/4"x6 PCS)	AISI 304	AISI 304	AISI 304
19	SPRING WASHER	8(2-1/2"x8PCS) 3(4"x12PCS)	AISI 304	AISI 304	AISI 304
20	HEX NUT	8(2-1/2"x8PCS) 3(4"x12PCS)	AISI 304	AISI 304	AISI 304



DIMENSIONS

NOMINAL SIZE	Ød	L	H	W	ØB	ØD	ØB1	S	S1	Q	ISO 5211				Cv FACTOR	TORQUE kgf-cm
											PCD ØA	PCD ØB	R1	R2		
1/4"	11.6	50	53	95	11.6	18	14.1	33	10	9	F03 / Ø36	F04 / Ø42	3.0	3.0	6.6	36
3/8"	12.8	50	53	95	14	18	17.6	33	10	9	F03 / Ø36	F04 / Ø42	3.0	3.0	7.9	36
1/2"	15	58	57	95	17.1	22	21.7	36.5	10	9	F03 / Ø36	F04 / Ø42	3.0	3.0	11.2	49
3/4"	20	70	64	95	22.5	27.5	27.1	44	10	9	F03 / Ø36	F04 / Ø42	3.0	3.0	21	70
1"	25	76	75	120	28	33.5	33.8	52	12	11	F04 / Ø42	F05 / Ø50	3.0	3.5	34	95
1-1/4"	32	86	81	120	35.5	44	42.6	57.5	12	11	F04 / Ø42	F05 / Ø50	3.0	3.5	57	135
1-1/2"	38	101	100	150	43	50	48.7	69.3	16	14	F05 / Ø50	F07 / Ø70	3.5	4.5	80	180
2"	50	115	109	150	53	61.5	61.1	78.5	16	14	F05 / Ø50	F07 / Ø70	3.5	4.5	148	252
2-1/2"	65	150	135	215	65	76	76.9	101	19	17	F07 / Ø70	F10 / Ø102	4.5	5.5	265	432
3"	80	168	145	215	80	92	89.5	111	19	17	F07 / Ø70	F10 / Ø102	4.5	5.5	415	675
4"	100	200	160	300	100	115	115.5	126.5	19	17	F07 / Ø70	F10 / Ø102	4.5	5.5	780	990

UNIT:mm