

**DIRECT MOUNTING PAD**

**A3WAYMH SIZE:1/4" ~ 4"**



**STAINLESS STEEL**  
 AISI-316 (DIN 1.4408) (ASTM-A351-CF8M)  
 AISI-304 (DIN 1.4308) (ASTM-A351-CF8)

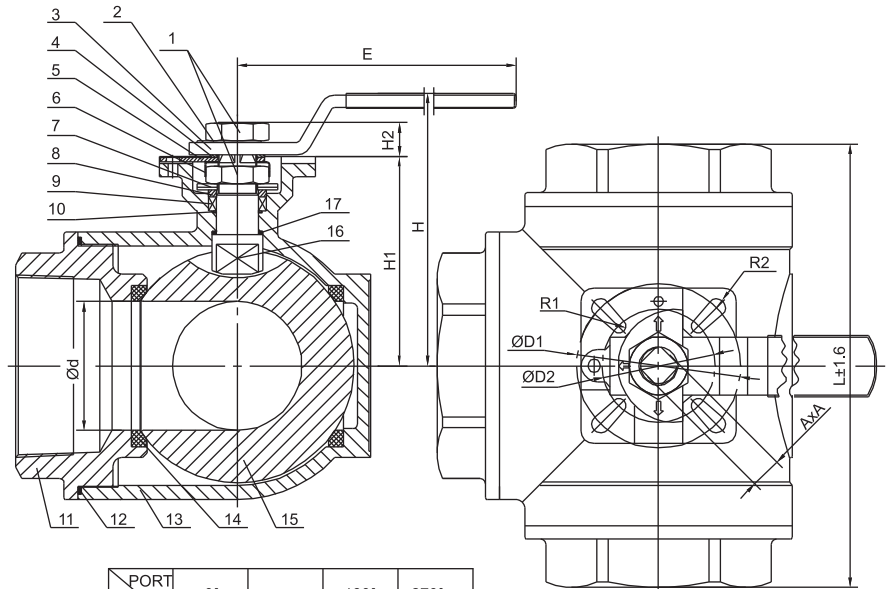
**FEATURES:**

- \*Pipe thread in accordance with ANSI B2.1, BS 21:1973, DIN 259/2999, ISO 228
- \*Pressure rating: 1000 PSI (63 BAR)
- \*Investment casting body and cap
- \*Blow-out proof stem
- \*ISO 5211 direct mounting pad
- \*Reduced port
- \*Lug body
- \*L-port / T-port

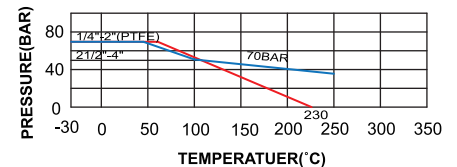
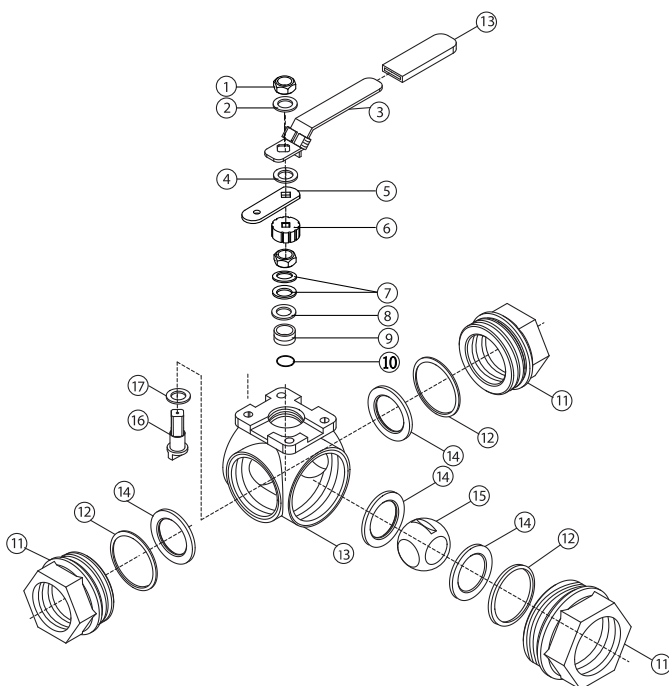
**MATERIALS LIST**

ITEM	PART	QTY	MATERIALS		
			316	304	WCB
1	Nut	2	304/316	304/316	304/316
2	Flow card	1	AL	AL	AL
3	Handle	1	201	201	201
4	Square Washer	1	304/316	304/316	304/316
5	Limit Stop	1	304/316	304/316	304/316
6	Stop-lock-cap	1	304/316	304/316	304/316
7	Belleville Washer	2	304/316	304/316	304/316
8	Bushing	1	304/316	304/316	304/316
9	Packing	2	PTFE	PTFE	PTFE
10	O-Ring	1	NBR	NBR	NBR
11	Cap	3	CF8M	CF8M	CF8M
12	Gasket	3	PTFE	PTFE	PTFE
13	Body	1	CF8M	CF8M	CF8M
14	Seat	4	PTFE/RPTFE	PTFE/RPTFE	PTFE/RPTFE
15	Ball	1	316	304	304
16	Stem	1	316	304	304
17	Thrust Gasket	1	PTFE	PTFE	PTFE

\*The difference between 3/8" & 1/2" is pipe thread.



PORT TYPE	0°	90°	180°	270°
L	1 ⊕ <sub>3</sub> 2	1 ⊕ <sub>3</sub> 2	1 ⊕ <sub>3</sub> 2	1 ⊕ <sub>3</sub> 2
T	1 ⊕ <sub>3</sub> 2	1 ⊕ <sub>3</sub> 2	1 ⊕ <sub>3</sub> 2	1 ⊕ <sub>3</sub> 2



**DIMENSIONS**

SIZE	Ød	H	H1	H2	A	E	L	R1	R2	D1	D2	UNIT:mm	
												KGS	N.M
1/4"	10	64	38.5	8.0	9.0	125	70	36	42	5.5	6.0	0.58	7.0
3/8"	12	60	38.5	8.0	9.0	125	70	36	42	5.5	6.0	0.58	7.0
1/2"	12	60	38.5	8.5	9.0	125	70	36	42	5.5	6.0	0.58	7.0
3/4"	15	64	41.5	8.5	9.0	125	80	36	42	5.5	6.0	0.74	10.5
1"	18	74	46.5	10	11	155	90	42	50	6.0	7.0	1.12	13
1-1/4"	25	84.5	57	10	11	155	124	42	50	6.0	7.0	2.27	22
1-1/2"	32	106	69	14	14	195	137	50	70	7.0	9.0	3.63	31.5
2"	38	112	74.5	14	14	195	152	50	70	7.0	9.0	4.67	36.5
2-1/2"	49	129	93	17	17	260	200	70	102	9.0	11	9.56	66
3"	65	150	112	20	19	300	240	70	102	9.0	11	16.9	112
4"	80	168	130	20	19	300	275	70	102	9.0	11		157