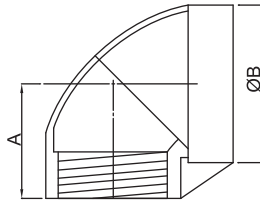


## ELBOW 90°

Class 150  
NPT ISO 7/1 Rp

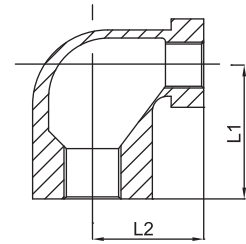


Tolerance:±1 UNIT:mm

SIZE	1/8"	1/4"	3/8"	1/2"	3/4"	1"
A	19	19.7	23	28	32.8	35.5
B	15	19.8	23	26	32	40
SIZE	1-1/4"	1-1/2"	2"	2-1/2"	3"	4"
A	44.7	48	57	68.6	75.5	86.5
B	49	55	68.7	87	95	123

## RED ELBOW 90°

Class 150  
NPT ISO 7/1 R

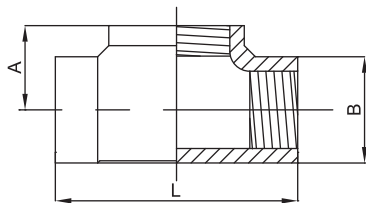


Tolerance:±1 UNIT:mm

SIZE	1/4"x1/8"	3/8"x1/8"	3/8"x1/4"	1/2"x1/4"	1/2"x3/8"	3/4"x3/8"
L1	22	19	24	21	26	26.5
L2	20	21	24	22	25	28
SIZE	3/4"x1 1/2"	1"x1/2"	1"x3/4"	1-1/4"x3/4"	1-1/4"x1"	1-1/2"x1"
L1	26.5	32.5	34	38	40	42
L2	28	34	35	40	40	45
SIZE	1-1/2"x1-1/4"	2"x1-1/4"	2"x1-1/2"			
L1	43	45	52			
L2	47	52	55			

## TEE

Class 150  
NPT ISO 7/1 Rp

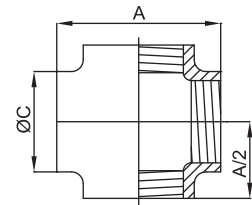


Tolerance:±1 UNIT:mm

SIZE	1/8"	1/4"	3/8"	1/2"	3/4"	1"	1-1/4"
A	17.8	19.7	22.6	26	30	36	41.8
B	14.6	19.9	23.6	26	31.7	40	49.5
L	36	39.8	46	53	59.7	73	83.7
SIZE	1-1/2"	2"	2-1/2"	3"	4"		
A	48.5	58.6	69.5	74.2	94.9		
B	55.7	68.3	87	98.9	123.6		
L	96	110	139	147	183		

## CROSS

Class 150  
NPT ISO 7/1 Rp

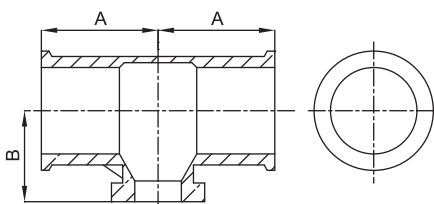


Tolerance:±1 UNIT:mm

SIZE	1/8"	1/4"	3/8"	1/2"	3/4"	1"	1-1/4"
A	38	40	46	53	63.9	75	90.9
C	15	18	20.5	27.8	33.5	41	49
SIZE	1-1/2"	2"	2-1/2"				
A	91.5	107	134.5				
C	55.3	69	83.5				

## RED TEE

Class 150  
NPT ISO 7/1 R

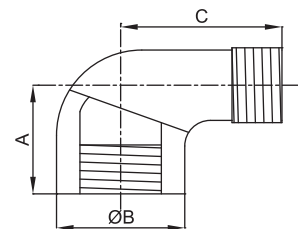


Tolerance:±1 UNIT:mm

SIZE	1/4"x1/8"	3/8"x1/8"	3/8"x1/4"	1/2"x1/8"	1/2"x1/4"	1/2"x3/8"	3/4"x1/4"
A	22	19	21.5	21	21.5	21.5	25
B	20	21	21	21.5	22	25.3	27
SIZE	3/4"x3/8"	3/4"x1/2"	1"x1/4"	1"x3/8"	1"x1/2"	1"x3/4"	1-1/4"x3/8"
A	25	26	25	26	31	31	30
B	27.3	27.6	29	30	31.5	32	37.5
SIZE	1-1/4"x1/2"	1-1/4"x3/4"	1-1/4"x1"	1-1/2"x1/2"	1-1/2"x3/4"	1-1/2"x1"	1-1/2"x1-1/4"
A	32	32	36	31	34	37	41
B	38	38.6	43	40	40	44	44
SIZE	2"x3/4"	2"x1"	2"x1-1/4"	2"x1-1/2"			
A	35	38	42	45			
B	47.5	51	51	51			

## STREET ELBOW 90°

Class 150  
NPT ISO 7/1 Rp R

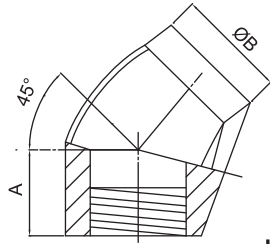


Tolerance:±1 UNIT:mm

SIZE	1/8"	1/4"	3/8"	1/2"	3/4"	1"	1-1/4"
A	16.9	19	23.5	28	31	38.5	55
B	14.5	17.5	20.8	26	31.6	40	50.5
C	23.8	29.8	33	38	46	53	57.5
SIZE	1-1/2"	2"	2-1/2"	3"	4"		
A	47.8	56	67	75	82		
B	55.8	67.8	84	94.5	124.8		
C	38	70	87.9	99.7	116.6		

## ELBOW 45°

Class 150  
NPT ISO 7/1 Rp



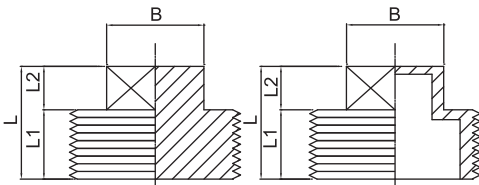
Tolerance:±1

UNIT:mm

SIZE	1/8"	1/4"	3/8"	1/2"	3/4"	1"	1-1/4"
A	19	21	23	25	30	32	33
B	15.9	19.8	23	27	32	42	49
SIZE	1-1/2"	2"	2-1/2"	3"	4"		
A	36	44	50	54	58.5		
B	57	69	85	98.5	124		

## SQUARE PLUG

Class 150  
NPT ISO 7/1 Rp R



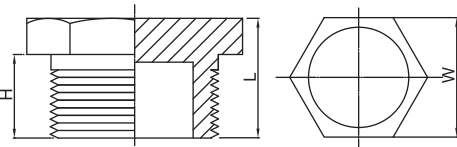
Tolerance:±1

UNIT:mm

SIZE	1/8"	1/4"	3/8"	1/2"	3/4"	1"	1-1/4"
L1	10	12	14	15	18	21	24
L2	6.0	6.0	6.0	7.0	9.0	11	12
L	16	18	20	22	27	32	36
B	7.0	9.0	10	11	16	19	22
SIZE	1-1/2"	2"	2-1/2"	3"	4"		
L1	25	29	31	34	40		
L2	12	14	15	16	22		
L	37	43	46	50	62		
B	22	27	32	36	58		

## HEXAGON PLUG

Class 150  
NPT ISO 7/1 R



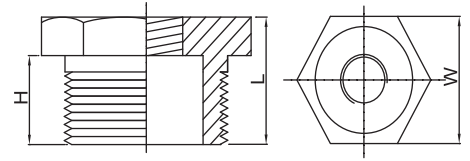
Tolerance:±1

UNIT:mm

SIZE	1/8"	1/4"	3/8"	1/2"	3/4"	1"	1-1/4"
H	8.0	11	11	15	16	18	21.5
L	14	17	17	21	24	27	32
W	12.7	16	19	24.5	30	36	46
SIZE	1-1/2"	2"	2-1/2"	3"	4"		
H	21.5	25.5	30.5	34	36		
L	33	38	45	48	54		
W	50	65	80.8	91	119		

## HEX BUSHING

Class 150  
NPT ISO 7/1 Rp R



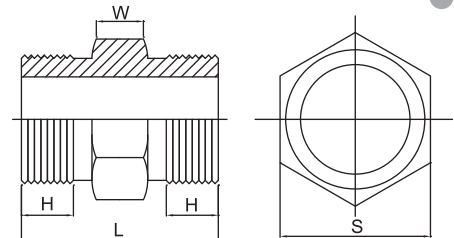
Tolerance:±1

UNIT:mm

SIZE	1/4"x1/8"	3/8"x1/8"	3/8"x1/4"	1/2"x1/8"	1/2"x1/4"	1/2"x3/8"	3/4"x1/8"	
L	18	19	19	21	21	21	26	
H	11.7	13	13	15	15	15	18	
W	16.7	21	21	25	25	25	29	
SIZE	3/4"x1/4"	3/4"x3/8"	3/4"x1/2"	1"x1/4"	1"x3/8"	1"x1/2"	1"x3/4"	
L	26	26	26	27.6	27.6	27.6	27.6	
H	18	18	18	19.6	19.6	19.6	19.6	
W	29	29	29	37	37	37	37	
SIZE	1-1/4"x1/2"	1-1/4"x3/4"	1-1/4"x1"	1-1/2"x1/2"	1-1/2"x3/4"	1-1/2"x1"	1-1/2"x1-1/4"	
L	32	32	32	32	32	32	32	
H	22.5	22.5	22.5	22	22	22	22	
W	48	48	48	53	53	53	53	
SIZE	2"x3/4"	2"x1"	2"x1-1/4"	2"x1-1/2"	2-1/2"x1"	2-1/2"x1-1/4"	2-1/2"x1-1/2"	
L	37.6	37.6	37.6	37.6	44	44	44	
H	25.5	25.5	25.5	25.5	32	32	32	
W	63	63	63	63	80	80	80	
SIZE	2-1/2"x2"	3"x1/2"	3"x3/4"	3"x1"	3"x1-1/4"	3"x1-1/2"	3"x2"	
L	44	46	46	46	46	46	46	
H	32	34.5	34.5	34.5	34.5	34.5	34.5	
W	80	92	92	92	92	92	92	
SIZE	3"x2-1/2"	4"x1/2"	4"x3/4"	4"x1"	4"x1-1/4"	4"x1-1/2"	4"x2"	
L	46	52	52	52	52	52	52	
H	34.5	38	38	38	38	38	38	
W	92	116	116	116	116	116	116	
SIZE	4"x2-1/2"	4"x3"						
L	52	52						
H	38	38						
W	116	116						

## HEX NIPPLE

Class 150  
NPT ISO 7/1 R



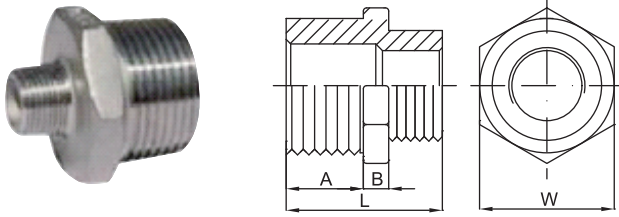
Tolerance:±1

UNIT:mm

SIZE	1/8"	1/4"	3/8"	1/2"	3/4"	1"	1-1/4"
H	12.9	12	12.8	15	17	19.6	20.7
L	33	30	31.8	38	43.8	49.7	54
S	12.5	17	20.9	26	31	38	45
W	7.5	6.0	6.0	6.0	9.5	10.5	12.5
SIZE	1-1/2"	2"	2-1/2"	3"	4"		
H	22.8	25.6	27.8	31	35.7		
L	59.9	65.5	72.9	80	91		
S	52	62.7	80	92	117.5		
W	14	14	17	18	19.5		

## RED HEX NIPPLE

Class 150  
NPT ISO 7/1 R



Tolerance:±1 UNIT:mm

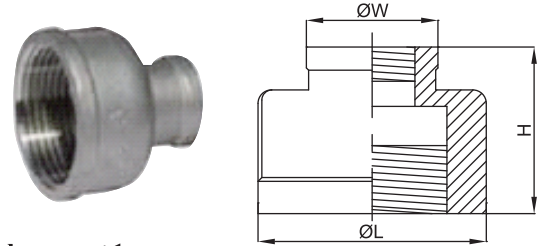
SIZE	1/4"x1/8"	3/8"x1/8"	3/8"x1/4"	1/2"x1/8"	1/2"x1/4"	1/2"x3/8"	3/4"x1/2"
A	12	13	13	16	16	16	18
B	8.0	6.0	6.0	6.0	6.0	6.0	12
L	31	30	31	33	34	35	46
W	16	20	20	23	23	23	29

SIZE	1"x1/2"	1-1/4"x1"	1-1/2"x1-1/4"	2"x1-1/2"
A	20	22	23	26
B	12	10	12.5	14
L	48	52	56.5	63
W	36	45	52	63

## RED SOCKET BANDED

Class 150  
NPT ISO 7/1 Rp



Tolerance:±1 UNIT:mm

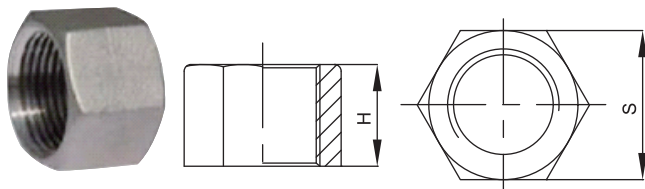
SIZE	3/8"x1/4"	1/2"x1/4"	3/4"x1/2"	1"x3/4"	1-1/4"x3/4"	1-1/2"x1"	1-1/2"x1-1/4"
H	29	33	39	42.5	46.6	50.6	53.5
L	22.5	28	33	42.5	50	59	59
W	19	21	27	34.5	33	43	51

SIZE	2"x3/4"	2"x1-1/4"	2"x1-1/2"	3"x2"	4"x3"
H	50	56.5	56.5	71	61.5
L	67.5	70	70	101	123.5
W	32	50.5	58.5	72	98

## HEX CAP

Class 150  
NPT ISO 7/1 Rp



Tolerance:±1 UNIT:mm

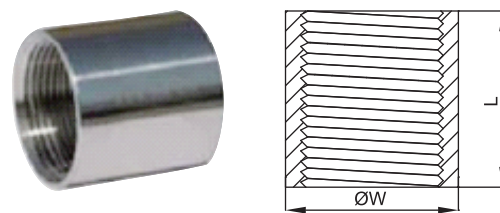
SIZE	1/8"	1/4"	3/8"	1/2"	3/4"	1"	1-1/4"
S	14	17	20.5	25	30	37	46
H	15	15	18	20	21	25	31

SIZE	1-1/2"	2"	2-1/2"	3"	4"
S	53	64	82	96	122
H	33	36	43	45	48

## SOCKET OD MACHINED

Class 150  
NPT ISO 7/1 Rp



Tolerance:±1 UNIT:mm

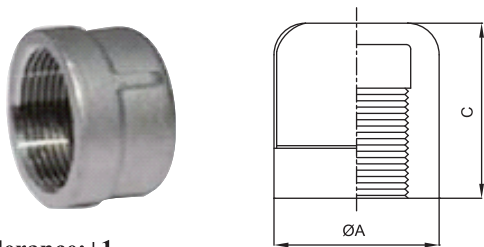
SIZE	1/8"	1/4"	3/8"	1/2"	3/4"	1"	1-1/4"
L	20	25	25	33	35	42	47
W	14	18.5	21.5	26	32	39	48

SIZE	1-1/2"	2"	2-1/2"	3"	4"
L	47	56	65	70	80
W	54	66.5	82	95	122

## CAP

Class 150  
NPT ISO 7/1 R



Tolerance:±1 UNIT:mm

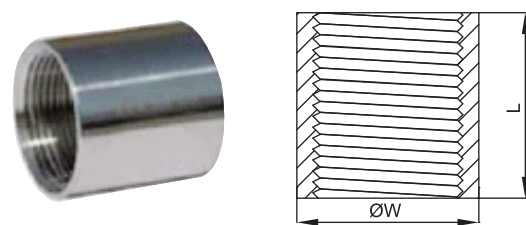
SIZE	1/8"	1/4"	3/8"	1/2"	3/4"	1"	1-1/4"
C	15	15	18	22.8	25	30	30.5
ØA	15.6	17.5	22	27.9	34	43	51

SIZE	1-1/2"	2"	2-1/2"	3"	4"
C	32	33.6	37.5	42	40
ØA	58.9	70.6	84.5	102	123.8

## SOCKET PLAIN

Class 150  
NPT ISO 7/1 Rp R



Tolerance:±1 UNIT:mm

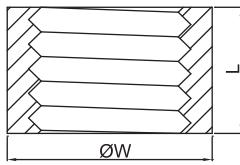
SIZE	1/8"	1/4"	3/8"	1/2"	3/4"	1"	1-1/4"
L	20	25	25	33	35	42	47
W	14	18.5	21.5	26	32	39	48

SIZE	1-1/2"	2"	2-1/2"	3"	4"
L	47	56	65	70	80
W	54	66.5	82	95	122

## HALF COUPLING

Class 150  
NPT ISO 7/1 R



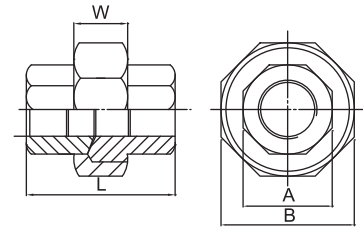
Tolerance:±1

UNIT:mm

SIZE	1/8"	1/4"	3/8"	1/2"	3/4"	1"	1-1/4"
L	11	11	14	16	18	20	23
W	14	18.5	21.5	26	32	39	48
SIZE	1-1/2"	2"	2-1/2"	3"	4"		
L	23	27	32	35	38		
W	54	66.5	82	95	122		

## UNIONS CONICAL F/F

Class 150  
NPT ISO 7/1 Rp



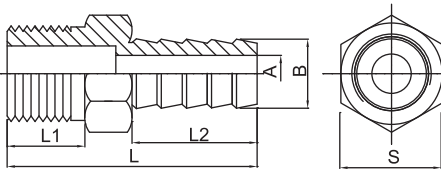
Tolerance:±1

UNIT:mm

SIZE	1/8"	1/4"	3/8"	1/2"	3/4"	1"	1-1/4"
A	18	18	22	26	32	40	49
B	29	29	34	39	47	58	67
W	13.5	13.5	14.5	15.5	16.5	18.5	21
L	33	33	34	40	42	49	55
SIZE	1-1/2"	2"	2-1/2"	3"	4"		
A	56	68	85	98	125		
B	76	90	108	123	152		
W	23	25	27	29	32		
L	58	63	71	79	92		

## HOSE NIPPLE

Class 150  
NPT ISO 7/1 R



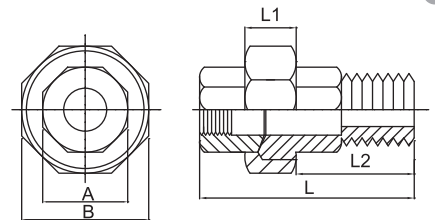
Tolerance:±1

UNIT:mm

SIZE	1/8"	1/4"	3/8"	1/2"	3/4"	1"	1-1/4"
A	4.0	5.0	6.0	9.0	15	21.5	27
B	7.0	9.0	10	14	20	27.5	34
L2	20	24	25	26	35	45	45
L	34	42	45	50	60	70	75
S	14	16	19	22	27.5	36.5	46
SIZE	1-1/2"	2"	2-1/2"	3"	4"		
A	33	45	55	68	91		
B	40	52	63.5	76.5	103		
L2	46	55	67	92	96		
L	80	90	110	135	150		
S	52	63	79	93	118		

## UNIONS CONICAL M/F

Class 150  
NPT ISO 7/1 Rp R



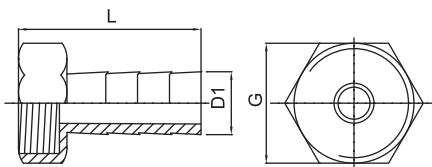
Tolerance:±1

UNIT:mm

SIZE	1/8"	1/4"	3/8"	1/2"	3/4"	1"	1-1/4"
A	18	18	22	26	32	40	49
B	29	29	34	39	47	58	67
L	42.5	42.5	45.5	53.5	56.5	66.5	74
L1	13.5	13.5	14.5	15.5	16.5	18.5	21
L2	19	19	21	26	27	33	36
SIZE	1-1/2"	2"	2-1/2"	3"	4"		
A	56	68	85	98	125		
B	76	90	108.5	123	152		
L	78	83	92	102	114		
L1	23	25	27	29	32		
L2	37	39	43	48	63		

## HEX HOSE NIPPLE

Class 150  
NPT ISO 7/1 R



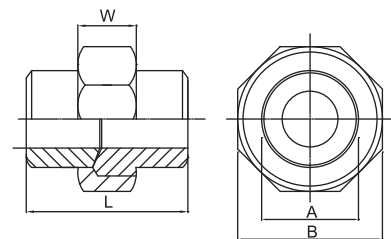
Tolerance:±1

UNIT:mm

SIZE	1/8"	1/4"	3/8"	1/2"	3/4"	1"	1-1/4"
L	32	34	39	45	48	53	59
D1	6.5	9.0	10.5	14	20.5	27.5	34
G	14	17	20.5	24.5	30	36	46
SIZE	1-1/2"	2"					
L	65	72					
D1	40.3	52					
G	55	64					

## UNIONS CONICAL BW/BW

Class 150 DIN 3239/1  
ANSI B16.25



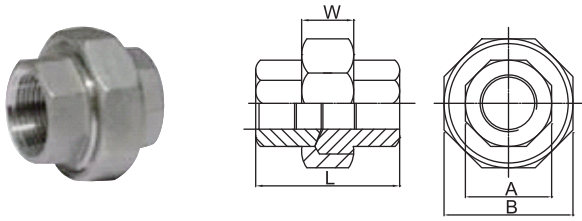
Tolerance:±1

UNIT:mm

SIZE	1/8"	1/4"	3/8"	1/2"	3/4"	1"	1-1/4"
A	10.7	13.5	17	21	26.9	33.7	42
B	29	29	34	39	47	58	67
W	13.5	13.5	14.5	15.5	16.5	18.5	21
L	33	33	34	40	42	49	55
SIZE	1-1/2"	2"	2-1/2"	3"	4"		
A	48	60	76	88.9	114.3		
B	76	90	108.5	123	152		
W	23	25	27	29	32		
L	58	63	71	77	92		

## UNIONS FLAT F/F

Class 150  
NPT ISO 7/1 Rp

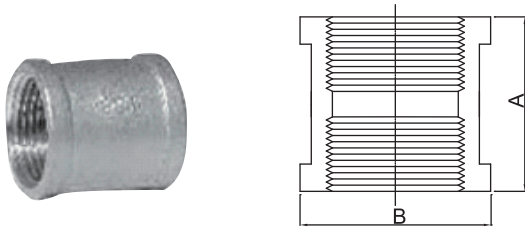


Tolerance:±1 UNIT:mm

SIZE	1/8"	1/4"	3/8"	1/2"	3/4"	1"	1-1/4"
A	18	18	22	26	32	40	49
B	29	29	34	39	47	58	67
W	13.5	13.5	14.5	15.5	16.5	18.5	21
L	33	33	34	40	42	49	55
SIZE	1-1/2"	2"	2-1/2"	3"	4"		
A	56	68	85	98	125		
B	76	90	108	123	152		
W	23	25	27	29	32		
L	58	63	71	79	92		

## SOCKET BANDED

Class 150  
NPT ISO 7/1 Rp

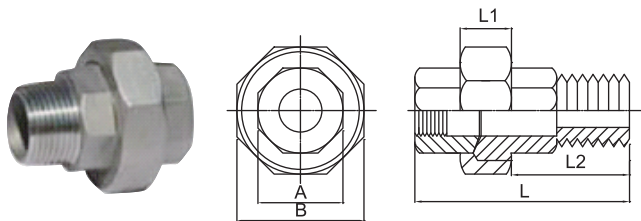


Tolerance:±1 UNIT:mm

SIZE	1/8"	1/4"	3/8"	1/2"	3/4"	1"	1-1/4"
A	20	25.6	27	34	36	44	52
B	15	21.3	25.7	27.4	32.5	41.6	50
SIZE	1-1/2"	2"	2-1/2"	3"	4"		
A	51	56	68	76.5	80		
B	56	69.5	87	98	123		

## UNIONS FLAT M/F

Class 150  
NPT ISO 7/1 Rp R

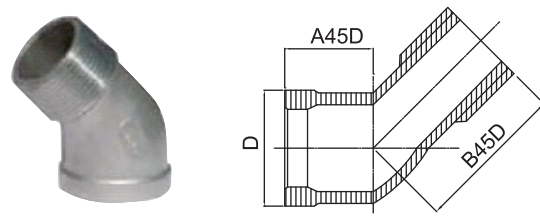


Tolerance:±1 UNIT:mm

SIZE	1/8"	1/4"	3/8"	1/2"	3/4"	1"	1-1/4"
A	18	18	22	26	32	40	49
B	29	29	34	39	47	58	67
L	42.5	42.5	45.5	53.5	56.5	66.5	74
L1	13.5	13.5	14.5	15.5	16.5	18.5	21
L2	19	19	21	26	27	33	36
SIZE	1-1/2"	2"	2-1/2"	3"	4"		
A	56	68	85	98	125		
B	76	90	108.5	123	152		
L	78	83	92	102	114		
L1	23	25	27	29	32		
L2	37	39	43	48	63		

## STREET ELBOE 45°

Class 150  
NPT ISO 7/1 Rp R

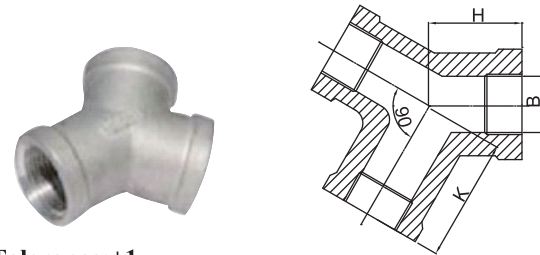


Tolerance:±1 UNIT:mm

SIZE	1/8"	1/4"	3/8"	1/2"	3/4"	1"	1-1/4"
A45D	16	17	19	21	25	29	34
B45D	21	23	27	31	36	42	49
D	15.5	18	22	28	34	43	51
SIZE	1-1/2"	2"	2-1/2"	3"	4"		
A45D	37	42	49	52	65		
B45D	51	59	71	72	96		
D	59	72	90	100	131		

## Y-TEE BANDED EQUAL

Class 150  
NPT ISO 7/1 Rp

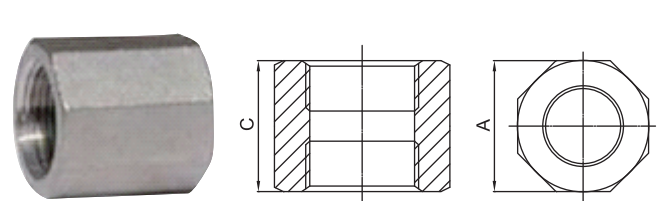


Tolerance:±1 UNIT:mm

SIZE	1/4"	3/8"	1/2"	3/4"	1"	1-1/4"	1-1/2"
K	19	23	27	32	36	46	48
H	20	25	30	35	41	50	52
B	18.3	21.8	28	34	43	51	59
SIZE	2"	2-1/2"	3"	4"			
K	57	69	78	97			
H	62	75	85	105			
B	71	90	105	131			

## HEX SOCKET F/F

Class 150  
NPT ISO 7/1 Rp R



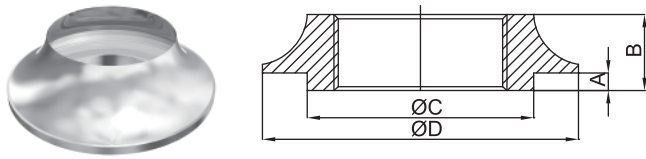
Tolerance:±1 UNIT:mm

SIZE	1/4"	3/8"	1/2"	3/4"	1"	1-1/4"	1-1/2"
C	25	27	34	38	44.5	49	54
A	19	23	29	35	46	54	63
SIZE	2"	2-1/2"	3"	4"			
C	66	69.5	75	85			
A	74	91	102	128			



### WELD SPUD

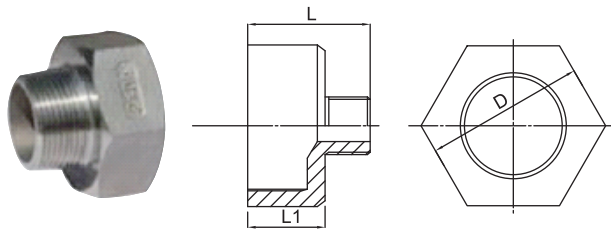
Class 150  
NPT ISO 7/1 Rp



Tolerance:±1		UNIT:mm					
SIZE	1/4"	3/8"	1/2"	3/4"	1"	1-1/4"	1-1/2"
A	4.0	4.0	4.0	4.5	5.0	5.0	5.0
B	11	12	14	15	17	19	20
C	20	23	28	33	41	49	56
D	35	39	44	49	56	65	72
SIZE	2"	2-1/2"	3"	4"			
A	5.0	5.0	5.0	5.0			
B	21.5	27	28.5	30			
C	68	83	98	125			
D	84	102	115	146			

### RED SOCKET M/F

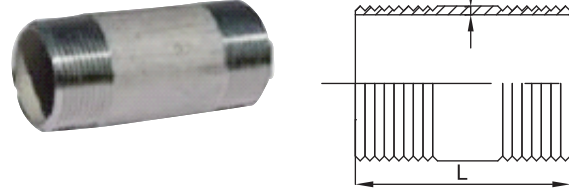
Class 150  
NPT ISO 7/1 R



Tolerance:±1		UNIT:mm					
SIZE	1/8"x1/8"	1/4"x1/8"	1/4"x1/4"	3/8"x1/8"	3/8"x1/4"	3/8"x3/8"	1/2"x1/8"
L	26.8	27	30	29	31	32	33
L1	15	16.5	16.4	18.5	18.5	18.3	22
D	14	17	17	21	21	21	26
SIZE	1/2"x1/4"	1/2"x3/8"	1/2"x1/2"	3/4"x1/8"	3/4"x1/4"	3/4"x3/8"	3/4"x1/2"
L	34	35	39	33.5	35	33.5	38.5
L1	22	22	22	23	23	23	23
D	26	26	26	32	32	32	32
SIZE	3/4"x3/4"	1"x1/8"	1"x1/4"	1"x3/8"	1"x1/2"	1"x3/4"	1"x1"
L	42	36.5	38	38.5	41.5	44	47
L1	23	26	26	26	26	26	26
D	32	38	38	38	38	38	38
SIZE	1-1/4"x1/4"	1-1/4"x3/8"	1-1/4"x1/2"	1-1/4"x3/4"	1-1/4"x1"	1-1/4"x1-1/4"	1-1/2"x1/4"
L	39	40	42.5	45	47	50	40
L1	27	27	27	27	27	27	28
D	49	49	49	49	49	49	54
SIZE	1-1/2"x3/8"	1-1/2"x1/2"	1-1/2"x3/4"	1-1/2"x1"	1-1/2"x1-1/4"	1-1/2"x1-1/2"	2"x1/4"
L	41	43.5	46	48	50	52	42
L1	28	28	28	28	28	28	30
D	54	54	54	54	54	54	63
SIZE	2"x3/8"	2"x1/2"	2"x3/4"	2"x1"	2"x1-1/4"	2"x1-1/2"	2"x2"
L	42.5	45.5	48	50	52	53	56
L1	30	30	30	30	30	30	30
D	63	63	63	63	63	63	63

### BARREL NIPPLE

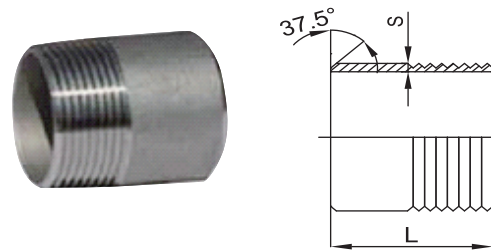
Class 150  
NPT ISO 7/1 R



Tolerance:±1		UNIT:mm					
SIZE	1/8"	1/4"	3/8"	1/2"	3/4"	1"	1-1/4"
S	1.7	2.0	2.0	2.5	2.5	3.2	3.2
L	40	40	40	60	60	60	80
SIZE	1-1/2"	2"	2-1/2"	3"	4"		
S	3.2	3.6	3.6	4.0	4.5		
L	80	100	100	120	120		

### WELD NIPPLE

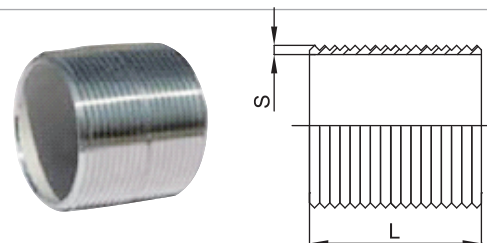
Class 150  
NPT ISO 7/1 R



Tolerance:±1		UNIT:mm					
SIZE	1/8"	1/4"	3/8"	1/2"	3/4"	1"	1-1/4"
S	1.7	2.0	2.0	2.5	2.5	3.2	3.2
L	30	30	30	35	40	40	50
SIZE	1-1/2"	2"	2-1/2"	3"	4"		
S	3.2	3.6	3.6	4.0	4.5		
L	50	50	60	70	80		

### PARAUEL NIPPLE

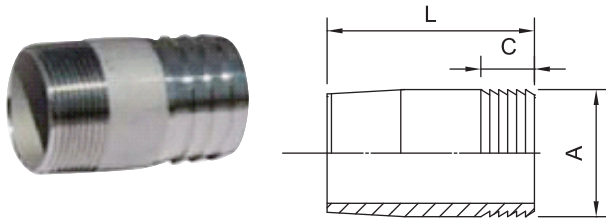
Class 150  
NPT ISO 7/1 R



Tolerance:±1		UNIT:mm					
SIZE	1/8"	1/4"	3/8"	1/2"	3/4"	1"	1-1/4"
S	1.7	2.0	2.0	2.3	2.5	3.2	3.2
L	16	18	22	25	30	35	38
SIZE	1-1/2"	2"	2-1/2"	3"	4"		
S	3.2	3.6	3.6	4.0	4.5		
L	38	45	55	60	70		

## MALE HOSE NIPPLE

Class 150  
NPT ISO 7/1 Rp

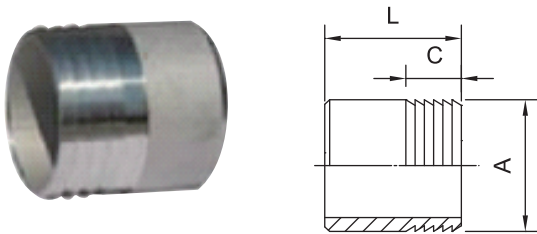


Tolerance:±1 UNIT:mm

SIZE	1/4"	3/8"	1/2"	3/4"	1"	1-1/4"	1-1/2"
L	42	47	50	60	62	63	65
A	12.8	16.3	21.3	26.1	33	41.6	47.5
C	24	24	24	32	32	32	32
SIZE	2"	2-1/2"	3"				
L	70	105	120				
A	60	74	88				
C	32	45	60				

## BW HOSE NIPPLE

Class 150

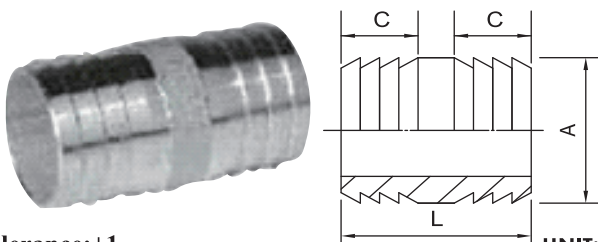


Tolerance:±1 UNIT:mm

SIZE	1/8"	1/4"	3/8"	1/2"	3/4"	1"	1-1/4"
L	32	38	40	45	60	60	65
A	9.8	12.8	16.3	21.3	26.1	33	41.6
C	16	24	24	24	32	32	32
SIZE	1-1/2"	2"	2-1/2"	3"			
L	65	65	90	100			
A	47.5	60	74	88			
C	32	32	45	60			

## DOUBLE HOSE NIPPLE

Class 150

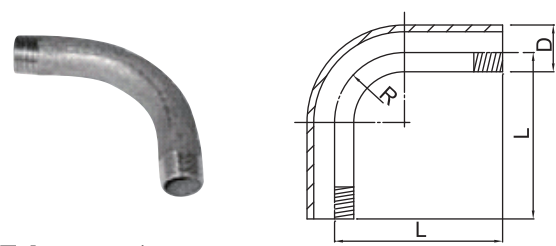


Tolerance:±1 UNIT:mm

SIZE	1/8"	1/4"	3/8"	1/2"	3/4"	1"	1-1/4"
L	42	50	50	50	76	76	76
A	9.8	12.8	16.3	21.3	26.1	33	41.6
C	16	20	20	20	32	32	32
SIZE	1-1/2"	2"	2-1/2"	3"			
L	76	76	105	140			
A	47.5	60	74	88			
C	32	32	45	60			

## 90° BEND M/M

Class 150  
NPT ISO 7/1 R

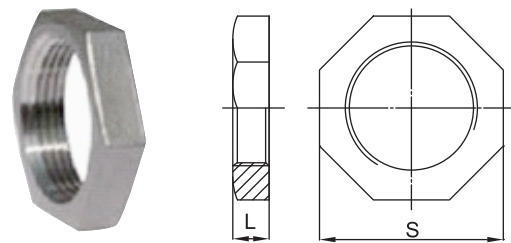


Tolerance:±1 UNIT:mm

SIZE	1/8"	1/4"	3/8"	1/2"	3/4"	1"	1-1/4"
D	10.2	13.5	17.2	21.3	26.9	33.7	42.4
L	50	60	70	80	110	120	140
R	30	40	45	55	70	80	105
SIZE	1-1/2"	2"					
D	48.3	60.3					
L	160	190					
R	115	125					

## LOCK NUTS

Class 150  
NPT ISO 7/1 Rp



Tolerance:±1 UNIT:mm

SIZE	1/8"	1/4"	3/8"	1/2"	3/4"	1"	1-1/4"
L	7.0	7.0	7.8	8.0	11	12	12.9
S	19	19	24	30	37.7	42.8	52
SIZE	1-1/2"	2"	2-1/2"	3"	4"		
L	14.6	15	17	20.7	24		
S	60	72	88	98.3	125		

