

V2F-300LBS SIZE: 1/2" ~ 4"



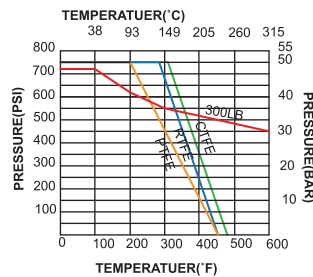
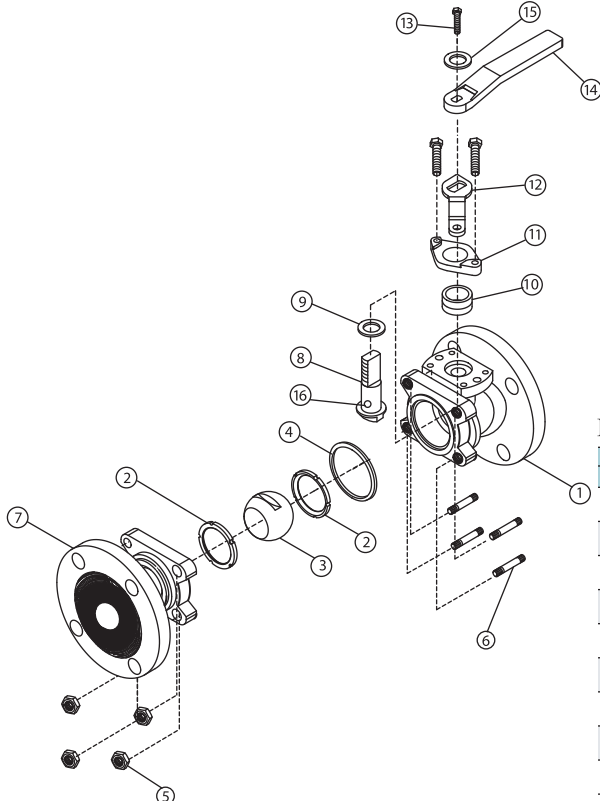
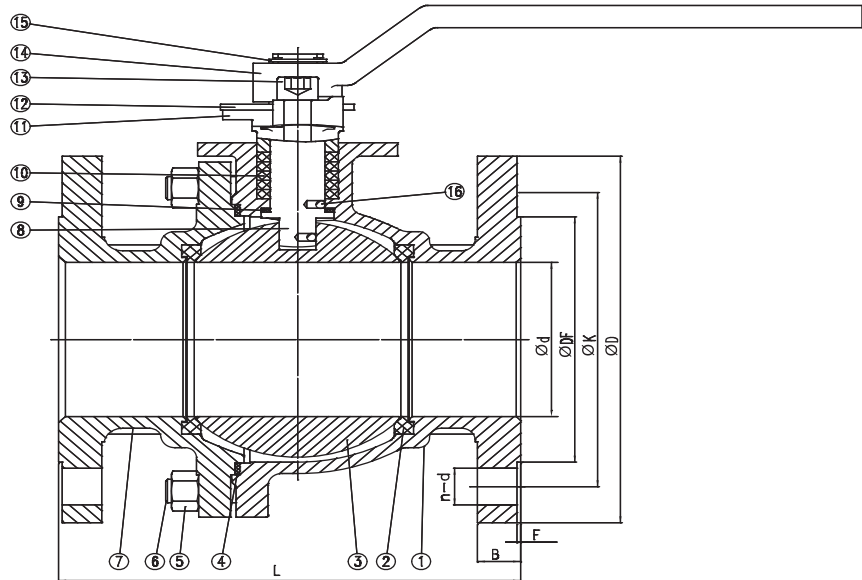
STAINLESS STEEL
 AISI-316 (DIN 1.4408) (ASTM-A351-CF8M)
 AISI-304 (DIN 1.4308) (ASTM-A351-CF8)
CARBON STEEL
 S-45C (DIN 1.0619) (ASTM-A216-WCB)

FEATURES:

- *Flange: ANSI B16.5 Class 300
- *Face to face: ANSI B16.10
- *Pressure rating: 300LBS
- *Investment casting body and cap
- *Blow-out proof stem
- *ISO 5211 mounting pad

MATERIALS LIST

| ITEM | PART | QTY | MATERIALS | | |
|------|-------------|-----------------------------|------------|----------|----------|
| | | | 304 | 316 | WCB |
| 1 | Body | 1 | CF8 | CF8M | WCB |
| 2 | Seat | 2 | PTFE/RPTFE | | |
| 3 | Ball | 1 | 304 | 304 | 316 |
| 4 | Gasket | 1 | PTFE | PTFE | PTFE |
| 5 | Nut | 1/2"-2"x4pcs 2-1/2"x6pcs | A194 2H | A194 2H | A194 2H |
| 6 | Bolt | 3"-4"x8pcs | A193 B7 | A193 B7 | A193 B7 |
| 7 | Cap | 1 | WCB | CF8 | CF8M |
| 8 | Stem | 1 | 304 | 304 | 316 |
| 9 | Washer | 1 | PTFE | PTFE | PTFE |
| 10 | Packing | 2 | PTFE | PTFE | PTFE |
| 11 | Gland | 1 | WCB | CF8 | CF8M |
| 12 | Limit Block | 1 | 201 | 201 | 201 |
| 13 | Hex Bolt | 1 | A193 B7 | A193 B7 | A193 B7 |
| 14 | Wrench | 1 | WCB+HZn | WCB+HZn | WCB+HZn |
| 15 | Ring | 1 | 65Mn | 65Mn | 65Mn |
| 16 | Antistatic | 1 | assembly | assembly | assembly |



| Performance Specification | | |
|---------------------------|----------------|---------|
| Nominal Pressure | PN50 | |
| Test Pressure | Intensity test | 7.5 MPa |
| | Back seal test | 5.5 MPa |
| | Seal test | / |
| | Gas test | 0.6 MPa |
| Working Temperature | -20 ~ 50 | °C |
| Medium: water oil & gas | | |

DIMENSIONS

| NOMINAL SIZE | MM | UNIT:mm | | | | | | | | | |
|--------------|-----|---------|-------|------|-----|-----|------|-----|-------|------|---------------|
| | | d | D | K | DF | L | B | F | N-d | kg | TORQUE kgf-cm |
| 1/2" | 15 | 14 | 95 | 66.5 | 35 | 140 | 14.2 | 1.6 | 4-Ø16 | 2.7 | 4.5 |
| 3/4" | 20 | 19 | 117 | 82.5 | 43 | 152 | 15.7 | 1.6 | 4-Ø19 | 3.8 | 7 |
| 1" | 25 | 25 | 124 | 89 | 51 | 165 | 17.5 | 1.6 | 4-Ø19 | 4.8 | 8.5 |
| 1-1/4" | 32 | 32 | 133 | 98.5 | 64 | 178 | 19.0 | 1.6 | 4-Ø19 | 6.9 | 14.5 |
| 1-1/2" | 40 | 38 | 155 | 114 | 73 | 190 | 20.6 | 1.6 | 4-Ø22 | 9.2 | 21 |
| 2" | 50 | 51 | 165 | 127 | 92 | 216 | 22.3 | 1.6 | 8-Ø19 | 12.9 | 28 |
| 2-1/2" | 65 | 64 | 190.5 | 149 | 105 | 241 | 25.4 | 1.6 | 8-Ø22 | | 51 |
| 3" | 80 | 76 | 209.5 | 168 | 127 | 283 | 28.4 | 1.6 | 8-Ø22 | | 86 |
| 4" | 100 | 102 | 254 | 200 | 157 | 305 | 31.7 | 1.6 | 8-Ø22 | | 121 |