

V2F-PN16 SIZE: 1/2" ~ 6"



STAINLESS STEEL
 AISI-316 (DIN 1.4408) (ASTM-A351-CF8M)
 AISI-304 (DIN 1.4308) (ASTM-A351-CF8)
 CARBON STEEL
 S-45C (DIN 1.0619) (ASTM-A216-WCB)

FEATURES:

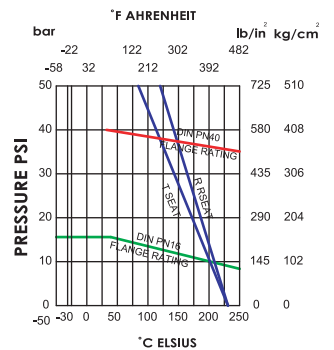
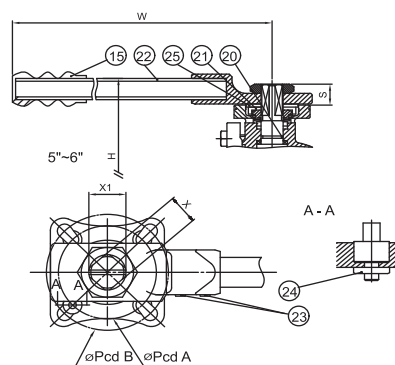
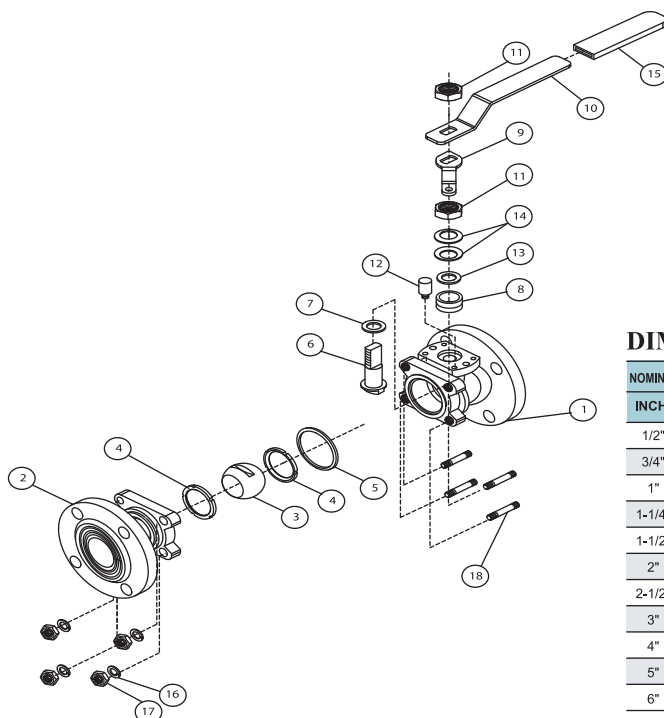
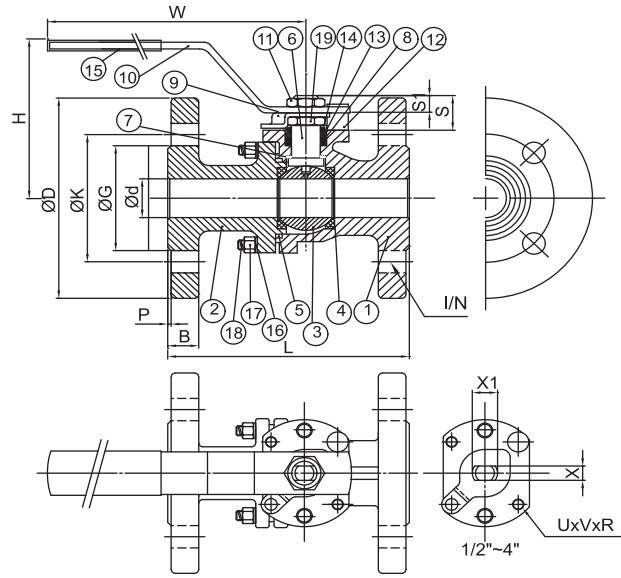
- *Flange: DIN 2633 PN16
- *Face to face: DIN 3202 F4/F5
- *Pressure rating: PN16
- *Investment casting body and cap
- *Blow-out proof stem
- *ISO 5211 mounting pad
- *5" & 6" with ISO 5211 direct mounting pad
- *Fire-safe design
- *Anti-static device

OPTION:

- *Casting handle
- *Solid ball: 1/2" ~ 6"
- *Hollow ball: 2-1/2" ~ 6"

MATERIALS LIST

ITEM	PARTS	QTY	MATERIALS		
			316	304	WCB
1	BODY	1	ASTM-A351-CF8M	ASTM-A351-CF8	ASTM-A216-WCB
2	CAP	1	ASTM-A351-CF8M	ASTM-A351-CF8	ASTM-A216-WCB
3	BALL	1	ASTM-A351-CF8M	ASTM-A351-CF8	ASTM-A351-CF8
4	BALL SEATS	2	PTFE	PTFE	PTFE
5	JOINT GASKET	1	Graphite	Graphite	Graphite
6	STEM	1	AISI 316	AISI 304	AISI 304
7	THRUST WASHER	1	PTFE	PTFE	PTFE
8	STEM PACKING	2	Graphite	Graphite	Graphite
9	STOPPER	1(1/2"-4")	AISI 304	AISI 304	AISI 304
10	HANDLE	1	AISI 304	AISI 304	AISI 304
11	HANDLE NUT	1	AISI 304	AISI 304	AISI 304
12	STOP PIN	1	AISI 304	AISI 304	AISI 304
13	STEM RING	1	AISI 304	AISI 304	AISI 304
14	BELLEVILLE WASHER	2	AISI 301	AISI 301	AISI 301
15	PLASTIC COVER	1	P.V.C	P.V.C	P.V.C
16	SPRING WASHER	(1/2"-2" x 4pcs)	AISI 304	AISI 304	AISI 304
17	NUT	(2-1/2"-3" x 6pcs)	AISI 304	AISI 304	AISI 304
18	STUD BOLT	(4" ~ 6" x 8pcs)	AISI 304	AISI 304	AISI 304
19	STEM NUT	1	AISI 304	AISI 304	AISI 304
20	O-RING	1(5"-6")	VITON	VITON	VITON
21	LOCK WASHER	1(5"-6")	AISI 304	AISI 304	AISI 304
22	HANDLE BAR	1(5"-6")	WCB+PAINT	WCB+PAINT	WCB+PAINT
23	INSERT	2(5"-6")	WCB	WCB	WCB
24	STOP NUT	1(5"-6")	AISI 304	AISI 304	AISI 304
25	SQUARE WASHER	1(5"-6")	AISI 304	AISI 304	AISI 304



DIMENSIONS

NOMINAL SIZE	ISO 5211		DIN-PN16										UNIT:mm						
	INCH	MM	Ød	UxVxR	L	ØD	ØK	ØG	B	I/N	X	X1	P	S	S1	H	W	TORQUE kgf-cm	KGS
1/2"	15	15	4-42xM5	xP0.8	115	95	65	45	14	14/4	8.6	M14x2.0	2	19	10	74	170	54	1.82
3/4"	20	20	4-42xM5	xP0.8	120	105	75	58	16	14/4	8.6	M14x2.0	2	24	13	77	170	78	2.47
1"	25	25	4-50xM6	xP1.0	125	115	85	68	16	14/4	10	M16x2.0	2	24	14	83	170	106	3.36
1-1/4"	32	32	4-50xM6	xP1.0	130	140	100	78	16	18/4	10	M16x2.0	2	29	17.5	88	170	150	4.62
1-1/2"	40	38	4-70xM8	xP1.25	140	150	110	88	16	18/4	12	M20x2.5	3	31	18.5	123	250	200	6.35
2"	50	50	4-70xM8	xP1.25	150	165	125	102	18	18/4	12	M20x2.5	3	32	20	132	250	290	8.52
2-1/2"	65	65	4-70xM8	xP1.25	170	185	145	122	18	18/4	12	M20x2.5	3	31	18.5	157	320	500	12.12
3"	80	80	4-102xM10	xP1.5	180	200	160	138	20	18/8	16	M27x3.0	3	48	33	166	365	770	17.86
4"	100	100	4-102xM10	xP1.5	190	220	180	158	20	18/8	16	M27x3.0	3	48	33	182	365	1100	23.34
5"	125	125	ØPCD A F10/Ø102 ØPCD B F12/Ø125		325	250	210	188	22	22/8	27	M32x2.0	3	47	-	200	530	1500	45
6"	150	150	ØPCD A F10/Ø102 ØPCD B F12/Ø125		350	285	240	215	22	22/8	27	M32x2.0	3	47	-	215	530	1800	62