

V3WMH-MOUNT SIZE: 1/4" ~ 2"



STAINLESS STEEL
 AISI-304 (DIN 1.4308) (ASTM-A351-CF8)
 CARBON STEEL
 S-45C (DIN 1.0619) (ASTM-A216-WCB)

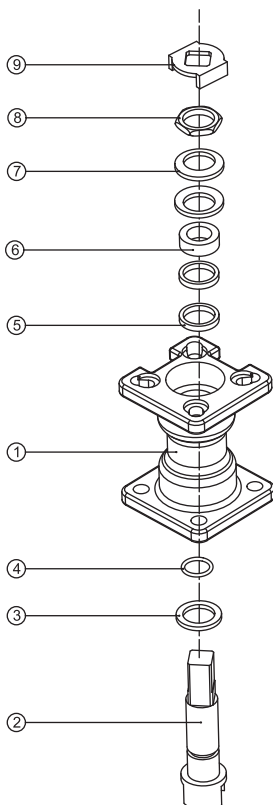
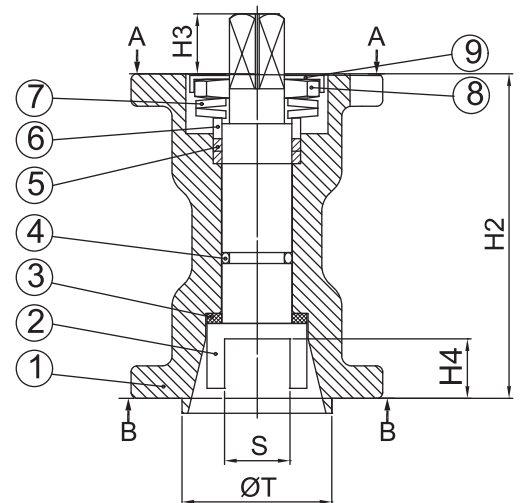
FEATURES:

- *Investment casting mount
- *Blow-out proof stem
- *ISO 5211 direct mounting pad

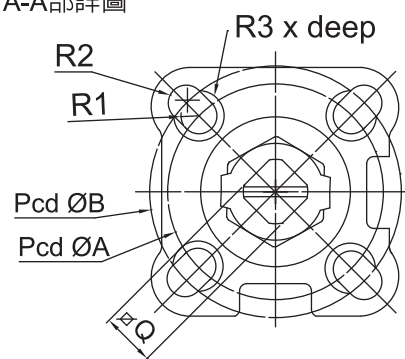
MATERIALS LIST

ITEM	PART	QTY	MATERIALS	
			304	WCB
1	Mount	1	ASTM-A351-CF8	ASTM-A216-WCB
2	Stem	1	AISI 304	AISI 304
3	Thrust washer	1	50%S.S.+PTFE	50%S.S.+PTFE
⊙ 4	O-ring	1	VITON	VITON
⊙ 5	Stem packing	2	PTFE	PTFE
⊙ 6	Stem ring	1	AISI 304	AISI 304
⊙ 7	B.V. washer	2	AISI 301	AISI 301
⊙ 8	Stem nut	1	AISI 304	AISI 304
⊙ 9	SQUARE WASHER	1	AISI 304	AISI 304

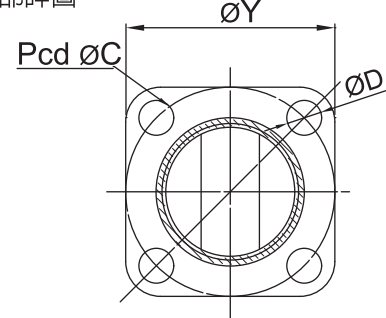
⊙ PARTS ARE SAME WITH V3WMH



A-A部詳圖



B-B部詳圖



DIMENSIONS

UNIT:mm

SIZE	A-A							B-B					KGS		
	ISO-5211			R1	R2	R3 x deep	H2	H3	Pcd ØC	ØD	H4	S		ØT	ØY
	Pcd ØA	Pcd ØB	ØQ												
1/4"~1/2"	F04/Ø42	F05/Ø50	11	R3.0	R3.5	R5.5 x 2.0	58	13.7	F03/Ø36	6.0	11	9.0	23.5	36	0.47
3/4"	F04/Ø42	F05/Ø50	11	R3.0	R3.5	R5.5 x 2.0	58	13.7	F03/Ø36	6.0	11	11	23.5	36	0.47
1"~1-1/4"	F04/Ø42	F05/Ø50	11	R3.0	R3.5	R5.5 x 2.0	65	12	F05/Ø50	7.0	12	11	25.5	50.4	0.68
1-1/2"~2"	F05/Ø50	F07/Ø70	14	R3.5	R4.5	R5.5 x 2.5	60	15	F07/Ø70	9.0	16	14	32.5	66.5	0.9